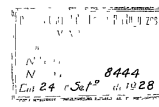


Caminhos de ferro Portugueses

Aprovado por officio 4112V
17-12-1928

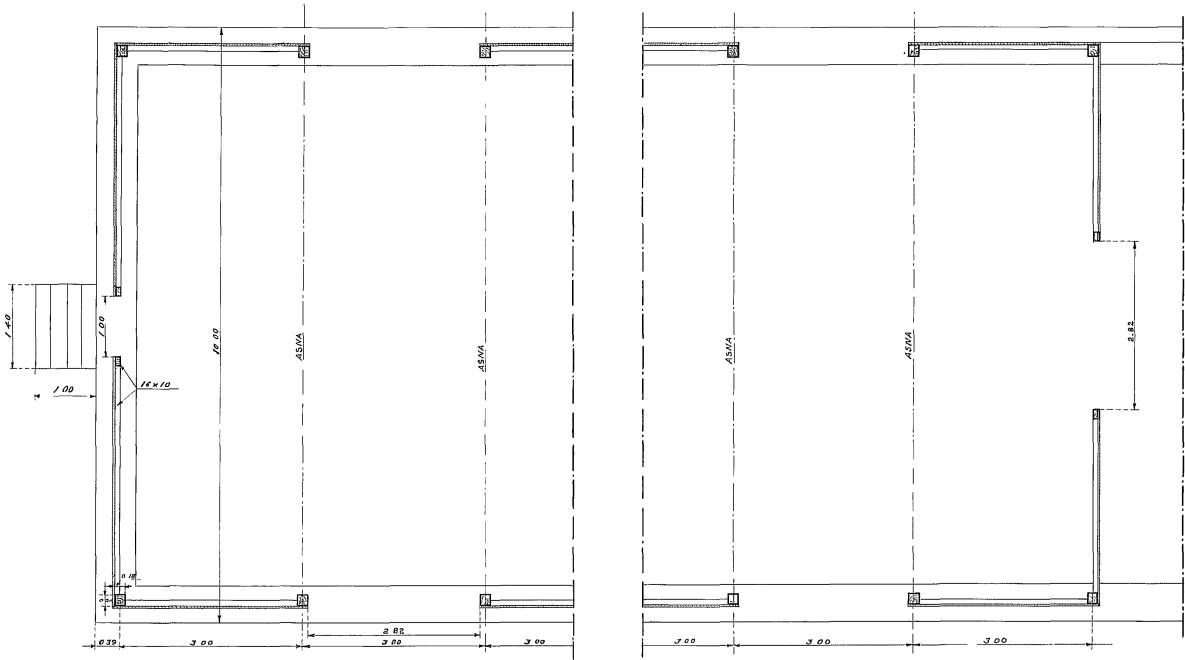
VIA E OBRAS

TIPO DE CAES COBERTO

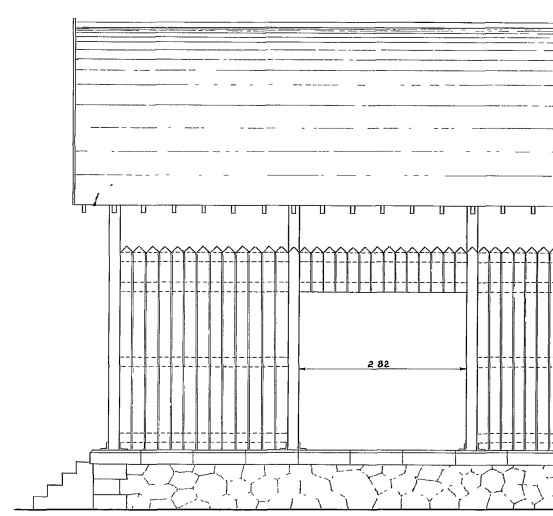


Escalas = 1/50 e 1/10

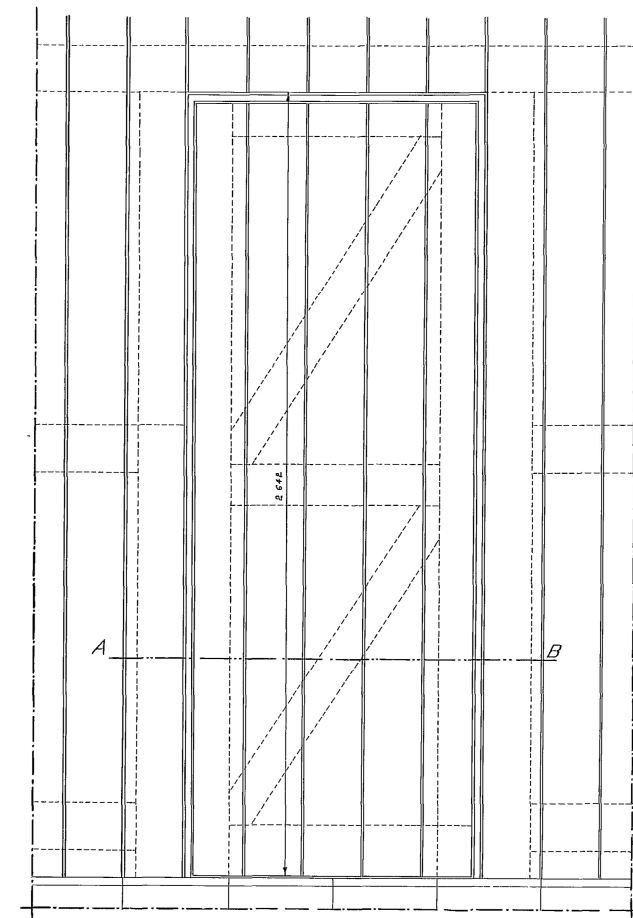
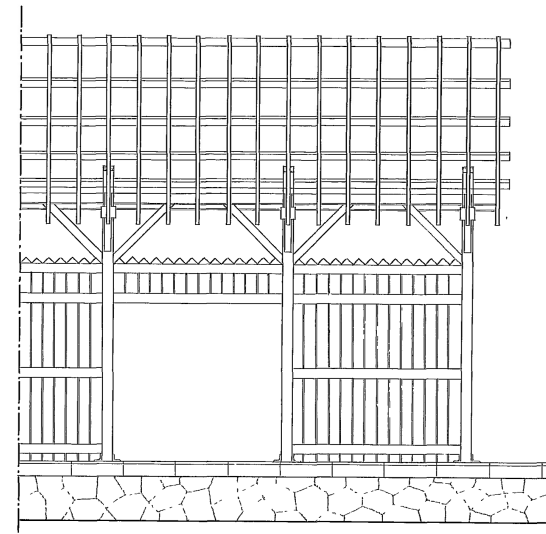
PARA DETALHES VER DES.º 8398 e 8448



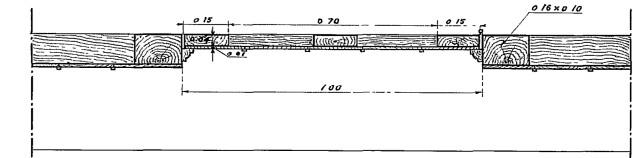
PLANTA



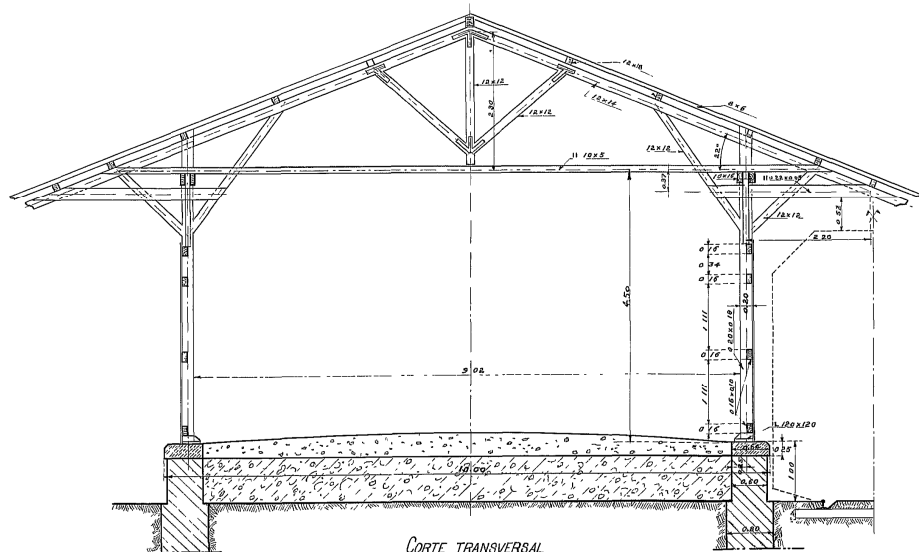
ALÇADO



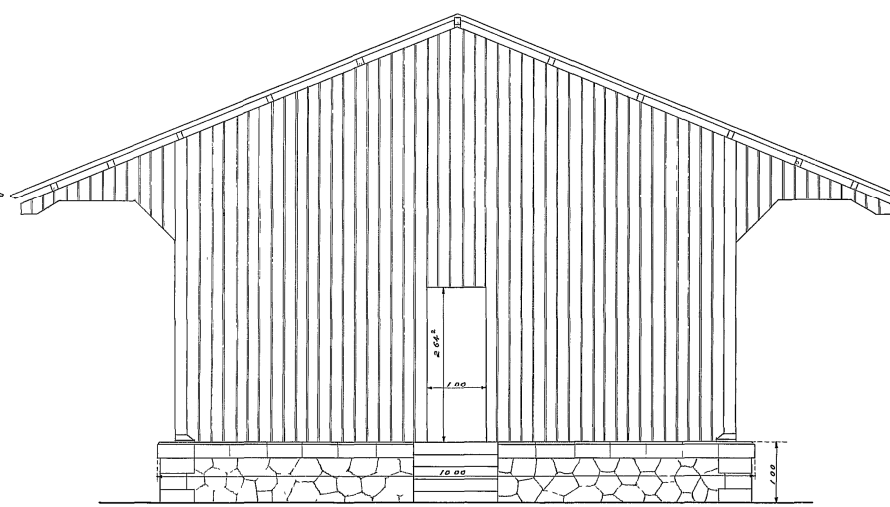
DETALHE DA PORTA



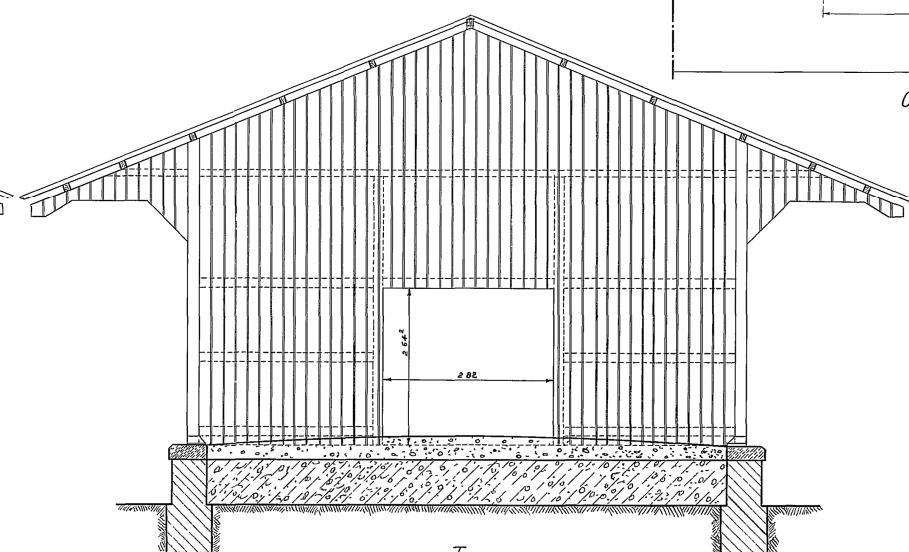
CORTE POR AB



CORTE TRANSVERSAL



TOPO



TOPO

1:50 1:10
23-V-28
1928

Handwritten signature or initials.